



# Ceeblue Streaming Cloud OBS

Version 1.1.0, 1 Oct 2020

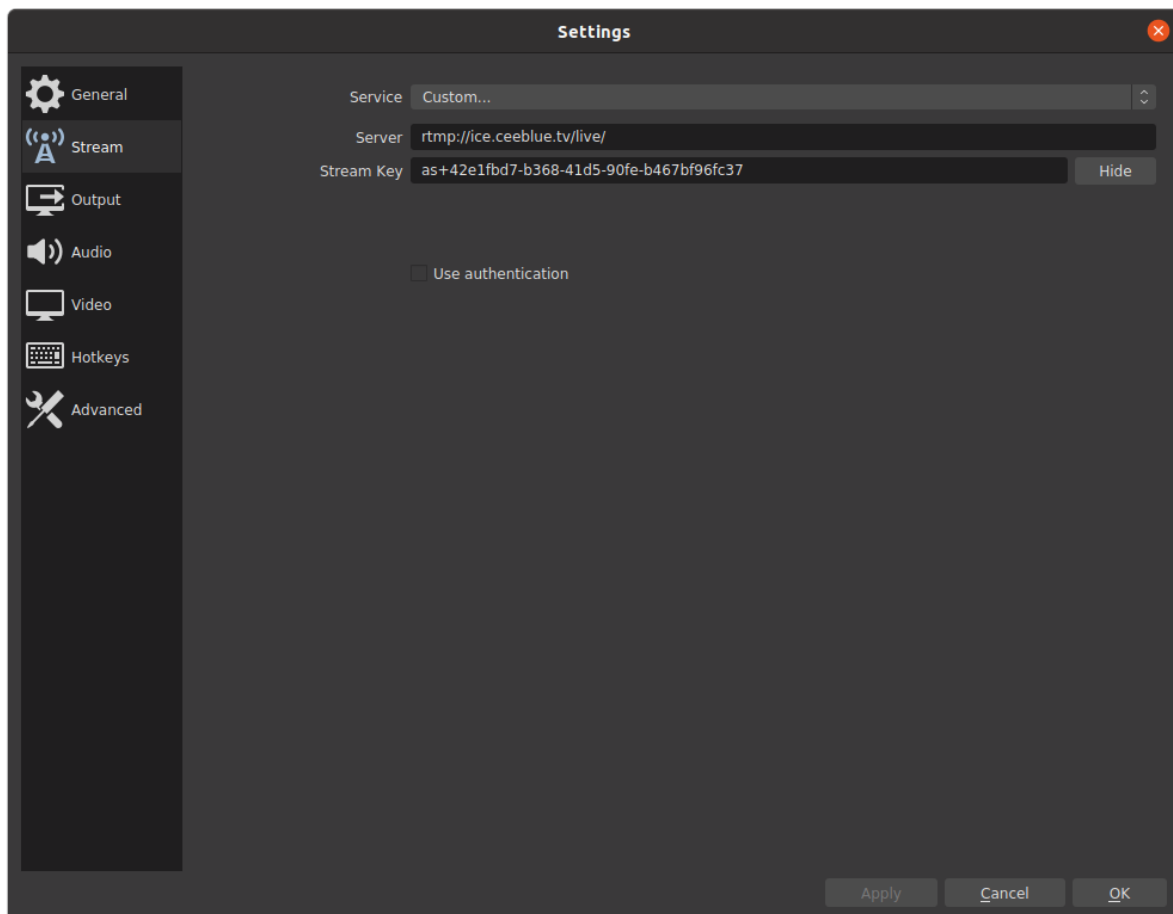
# OBS

## Stream setup

### Public stream

**Server:** Ceeblue endpoint has format `rtmp://nodeid.ceeblue.tv/live/` (Example: `rtmp://ice.ceeblue.tv/live/`)


**Stream key:** Ceeblue stream id (Example: `as+0bff92cd-a702-45df-9bcf-2738111514a1`)



## Private Stream

### Input


Stream id

Access token

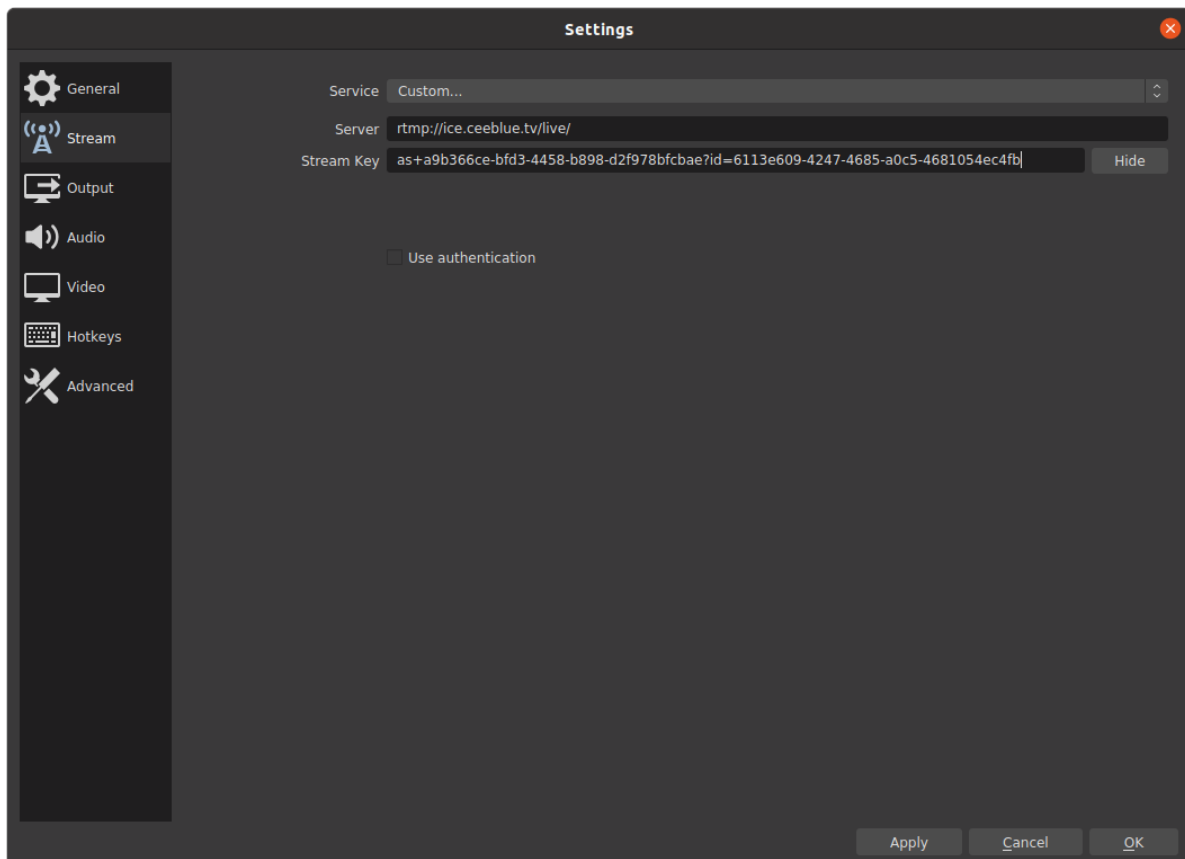
 

Endpoint

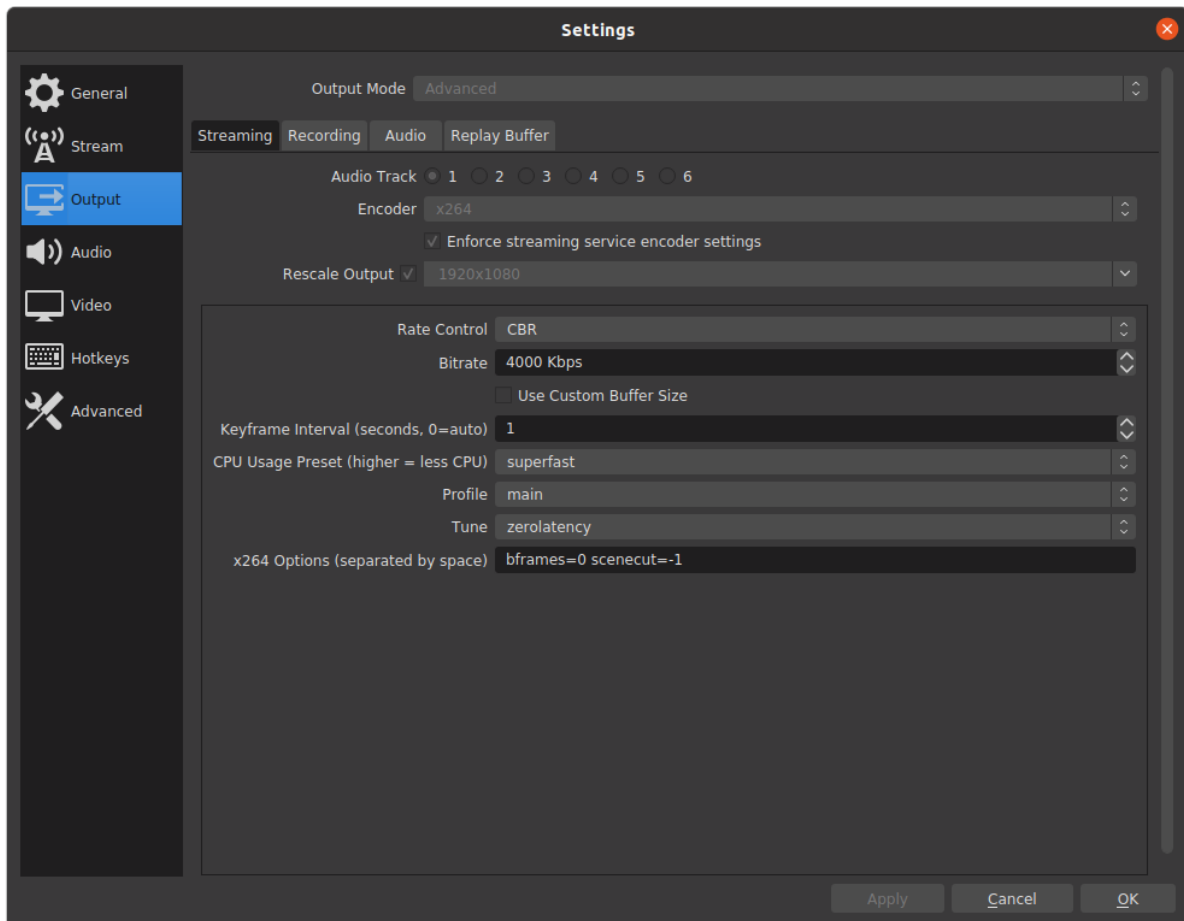
 

**Server:** Ceeblue endpoint has format `rtmp://nodeid.ceeblue.tv/live/` (Example: `rtmp://ice.ceeblue.tv/live/`)

**Stream key:** Ceeblue stream id, has format `streamId?id=streamToken` (Example: `as+a9b366ce-bfd3-4458-b898-d2f978bfcbae?id=6113e609-4247-4685-a0c5-4681054ec4fb`)



## Video settings



**Encoder:** X264

**Rate control:** CBR

**Keyframe interval:** 1-2s

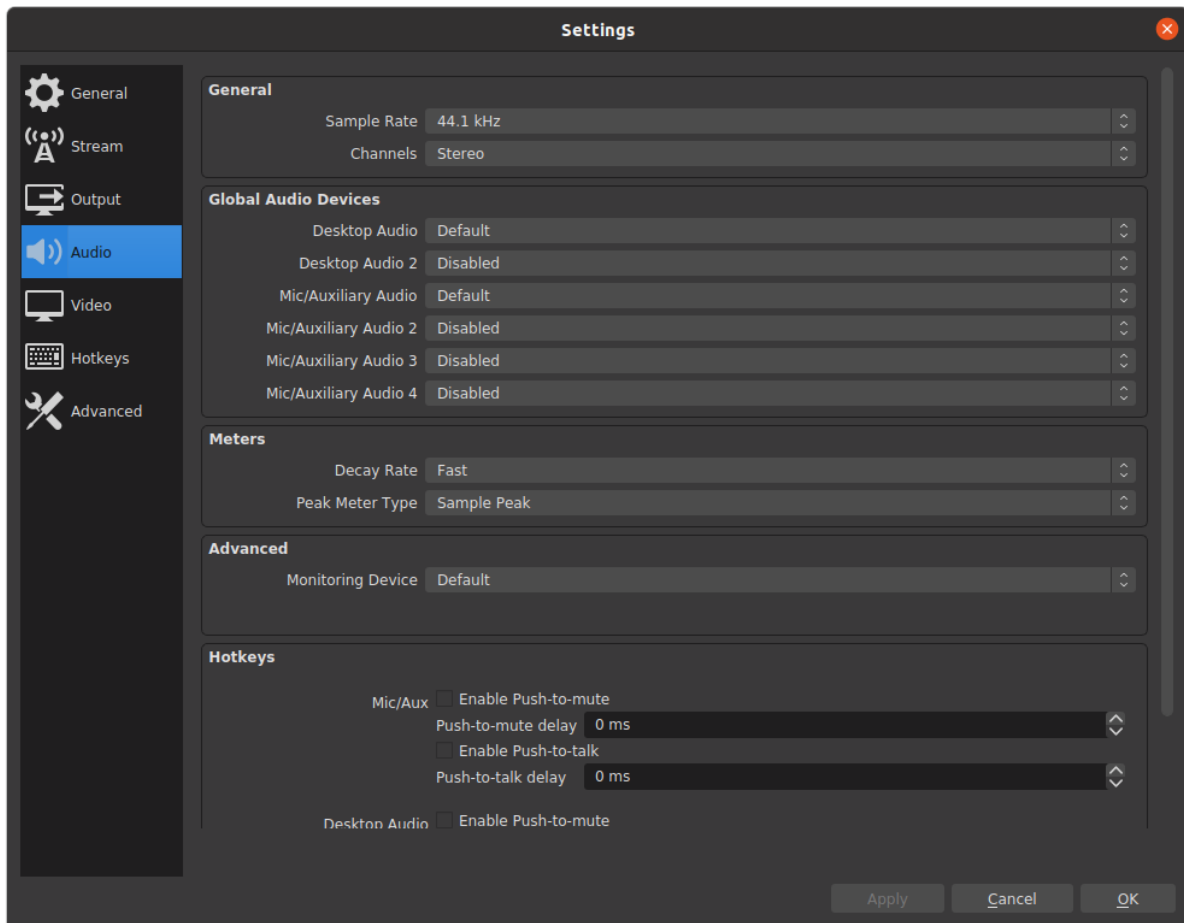
**CPU Preset:** superfast

**Profile:** main

**Tune:** zerolatency

**X264 Options:** bframes=0 scenecut=-1

# Audio settings



Sample rate: 44.1 khz